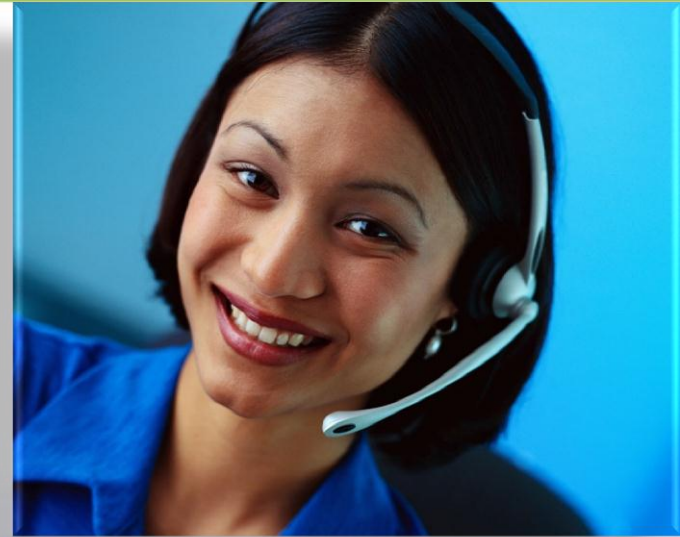


***Welcome Everyone!***  
***Congratulations if you are here***  
***for the very first time***



# ***Why are you here?***

- *Dream of a better life for yourself and your family*
- *Desire to secure retirement*
- *Been downsized - layoffs*
- *Tired of Living Pay Check to Paycheck*
- *Desire to see kids and family more- time freedom*



***We Have the solution***



# Wellness Industry



**Paul Zane Pilzer**  
Economist – Author – Self Made Millionaire

*Predicts the wellness industry will grow from a \$200 Billion industry Today to over a \$1 Trillion by 2015*





Mark Hughes devoted his life to making the dream of Herbalife come true

Mark's mother, JoAnn Hughes, lost her #10 through efforts to lose weight.



MARK HUGHES

## Herbalife around the world



Herbalife Plaza, Los Angeles, CA



Germany Distribution Center



Brazil Distribution Center



Japan Distribution Center



U.K. Distribution Center



Mexico Distribution Center



\*Numbers shown are approximations, they are not the actual sales numbers.

- In 1980, Mark Hughes founded Herbalife, selling products out of the trunk of his car
- Thanks to positive product results, Herbalife is now a global company
- We combine the best of science and nature

- A premier nutrition and weight-management company
- Millions of satisfied customers in 65 countries
- Listed on the New York Stock Exchange

# MICHAEL O. JOHNSON

## CEO – Herbalife International

- Former President of Walt Disney International
- Named 2005 Readers Choice CEO of The Year by Market Watch
- Accomplished Tri-Athlete



# Corporate Office at the L.A. Live



## The science behind the products



UCLA\* Mark Hughes Cellular and Molecular Nutrition Laboratory



Dr. Ignarro being awarded the Nobel Prize in Medicine



Herbalife Product and Science Center



University of California (UCLA)\* In Los Angeles, CA

Herbalife Product and Science Center, Los Angeles, CA

## The research behind the science

### Scientific Leadership

Bringing great minds together, our internal science team and Nutrition Advisory Board, made up of distinguished doctors and leading experts in the fields of health and nutrition, are the guiding force behind our innovative products.



**Steve Herzig, Ph.D., Chief Scientific Officer**

- In charge of all scientific research efforts on behalf of Herbalife
- Spearheaded the establishment of the Herbalife Product and Science Center
- Oversees Herbalife product research and development, leading to new product launches
- Prior board member of the International Life Sciences Institute (ILSI)



**David Heber, M.D., Ph.D., F.A.C.P., F.A.C.N.**  
Chairman of Herbalife's Scientific Advisory Board and Nutrition Advisory Board

- Professor, UCLA Department of Medicine\*
- Director, UCLA Center for Human Nutrition\*
- Director, UCLA Clinical Nutrition Research Unit\*



**Luigi Gratton, M.D., M.P.H.**  
Vice President, Medical Affairs and Education

- Awarded Diplomate of The American Board of Family Practice and The American Board of Physician Nutrition Specialists
- Physician specialist in Family Medicine; Clinical Physician at the UCLA Center for Human Nutrition in the Risk Factor Obesity Program\*



**Lou Ignarro, Ph.D., Nobel Laureate in Medicine**

- 1998 Nobel Laureate in Medicine
- Distinguished Professor of Pharmacology at the UCLA School of Medicine\*
- Recipient of the 1998 Basic Research Prize of the American Heart Association

# Herbalife Worldwide 73 Countries in 2010



## Asia Pacific

Australia  
China  
Hong Kong  
India  
Japan  
Korea  
Macau

Malaysia  
New Zealand  
Philippines  
Singapore  
Taiwan  
Thailand  
Vietnam

## North America

Canada  
Mexico  
United States

## Latin America

Argentina  
Bolivia  
Brazil  
Chile  
Colombia  
Costa Rica  
Dominican Republic  
Ecuador  
El Salvador  
Guatemala  
Honduras  
Jamaica  
Panama  
Peru  
Venezuela

## Africa

Botswana  
Lesotho  
Namibia  
South Africa  
Swaziland  
Zambia

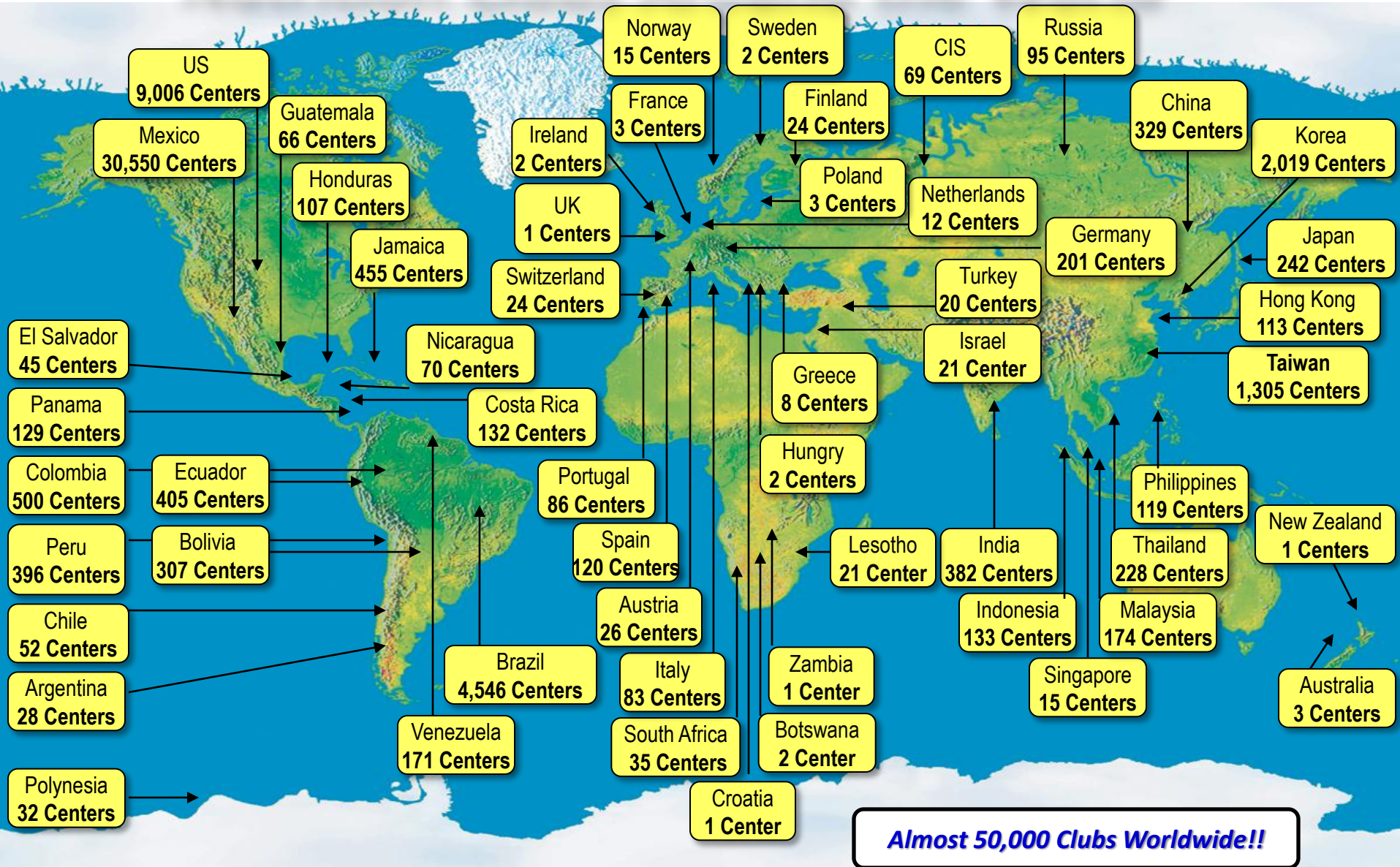
## Europe

Austria  
Belgium  
Croatia  
Cyprus  
Czech Republic  
Denmark  
Estonia  
Finland  
France  
Germany  
Greece  
Hungary  
Iceland  
Ireland

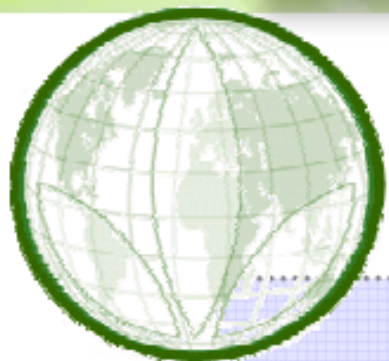
Israel  
Italy  
Latvia  
Lithuania  
Netherlands  
Poland  
Portugal  
Romania

Russia  
Slovak Republic  
Spain  
Sweden  
Switzerland  
Turkey  
Ukraine  
United Kingdom

# Nutrition Clubs Around the World



# 30 Years of Strong Growth



***On Track...***  
***\$4.2 Billion Goal 2010***  
***Over \$10 Million A Day!***



# The Products

It's all about the products!



Fast foods are high in calories and low in nutritional value – they make us gain weight

- Hamburger, fries & soda
- 1290 calories
  - 49g fat
  - 30g protein
  - 65mg cholesterol

\$5.39



\$2.58

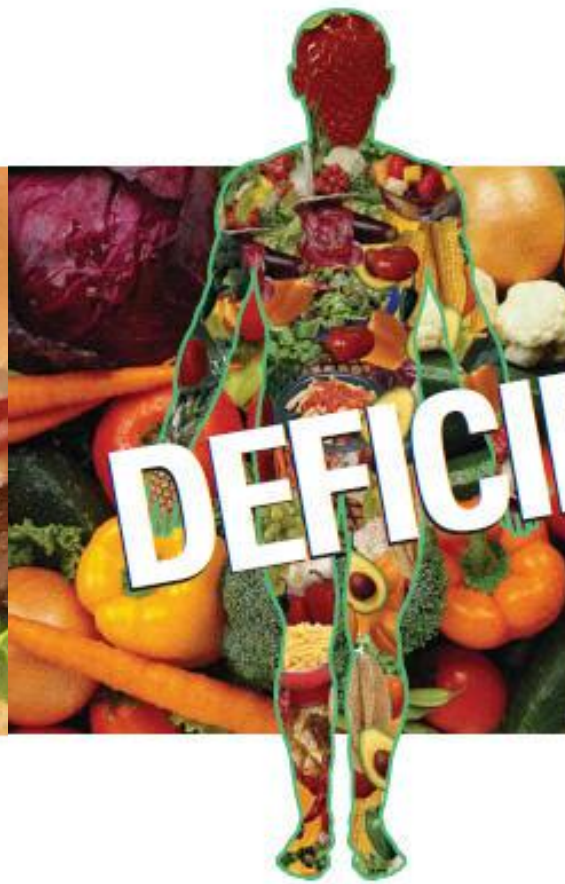
- Two deluxe tacos
- 420 calories
  - 27g fat
  - 18g protein
  - 80mg cholesterol



**EXCESS!**

FAT, SUGAR, WHITE FLOUR,  
SALT, PRESERVATIVES,  
FOOD COLORING

The modern diet is lacking in nutrition – our health suffers



**DEFICIENT!**

VITAMINS, MINERALS, FIBER,  
PROTEIN, AMINO ACIDS,  
PHYTONUTRIENTS, ANTIOXIDANTS



\$2.04

- Formula 1 Nutritional Shake  
(1 serving of Formula 1, 8 oz. of non-fat milk and 1 oz. of strawberries)
- 228 calories
  - 1g fat
  - 18g protein
  - 5mg cholesterol

# Cellular Nutrition and the Power of Protein

- Combining Cellular Nutrition and the Power of Protein makes us unique.
- Cellular Nutrition helps ensure the nutrients your body needs daily are absorbed and delivered throughout your body at the cellular level.
- The Power of Protein means, your customers can manage their weight by:
  1. Controlling their hunger
  2. Maintaining their lean body mass



# Results



lost 80 lbs.

**MARISELA G.**  
before: 196 lbs.  
after: 116 lbs.



**ELI A.**  
before: 209 lbs.  
after: 165 lbs.



lost 44 lbs.



lost 45 lbs.

**LISA S.**  
before: 160 lbs.  
after: 115 lbs.



**JERRY P.**  
before: 211 lbs.  
after: 178 lbs.



lost 33 lbs.

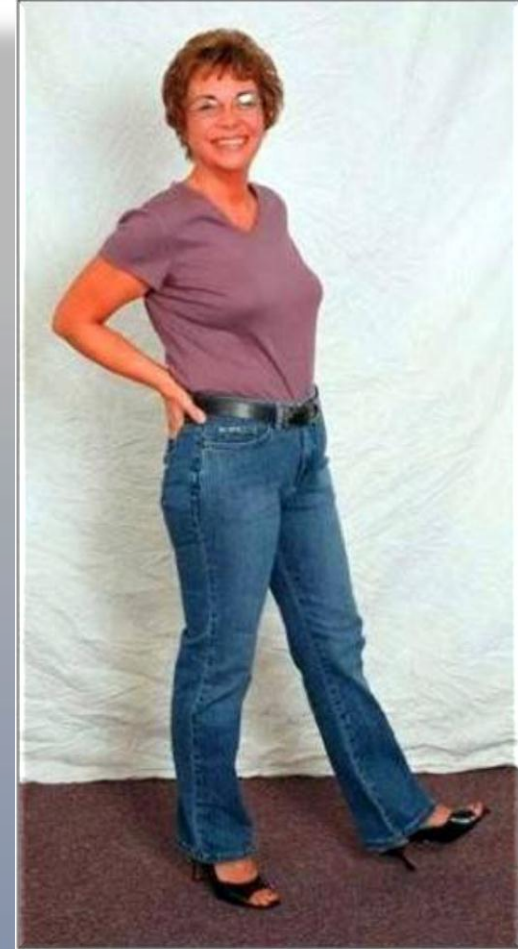
***When the body gets  
everything it needs,  
the results are AMAZING***



# ***Over 100 Pound Results***



***Angie Before***



***Angie After***

# *We help our Children*

**Before**



**1 year later**



**Whether you have a lot or little to lose, it's Powerful**



**402 lbs  
Lost**

## **Jim Poore**

Weighing at 281kg, there was nothing I could do as a normal person. I even had problem walking up stairs! I used 19 months working together with my personal weight-management coach and in the end lost 182kg. Now I am a normal person and have no problems walking up stairs anymore!

Thank you Herbalife!

Jim Poore from USA



**Guinness World Records - Lost 183kg**

**健力士世界纪录 - 共减一百八十三公斤**

# Sports Nutrition



Michael: Before and After

# Powerful Nutrition Does Amazing Things



標識玉使用前



標識玉使用后

HERBALIFE.

*Making the world healthier.*



使用前



使用后

HERBALIFE.

*Making the world healthier.*

# Great Products Mean Great Business Opportunities!



Dream it.  
Do it.



Just take a look at your options



#### A Part-Time Opportunity

- Would you like to earn extra income during your free time?
- Do you like the idea of extra income without it interfering with your current job responsibilities?



#### A Full-Time Opportunity

- Are you tired of your current job and looking for a change?
- Are you looking for more free time with your family?
- Are you looking for financial freedom?



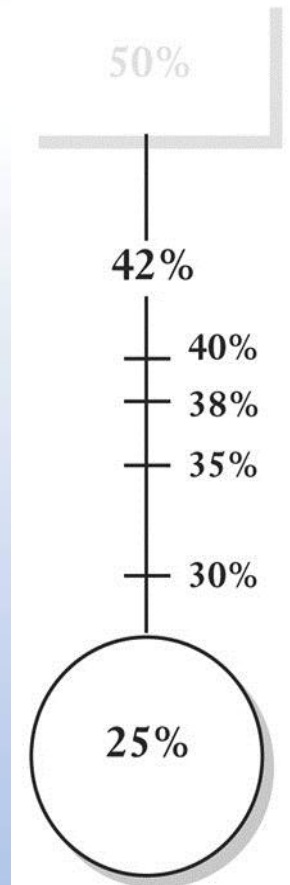
The opportunity to earn more than you ever thought possible and make your dreams come true!

- Would you like to take the first step?

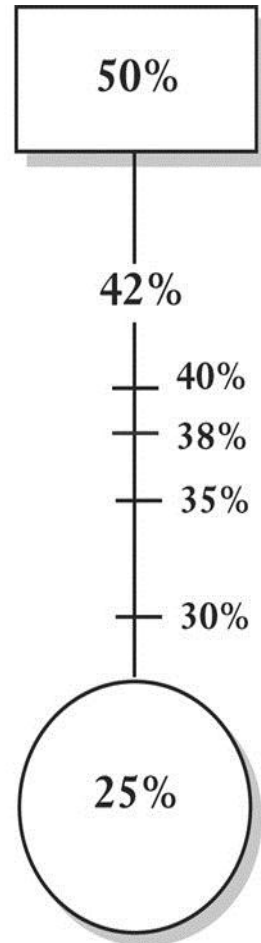
# Getting Started: Distributor



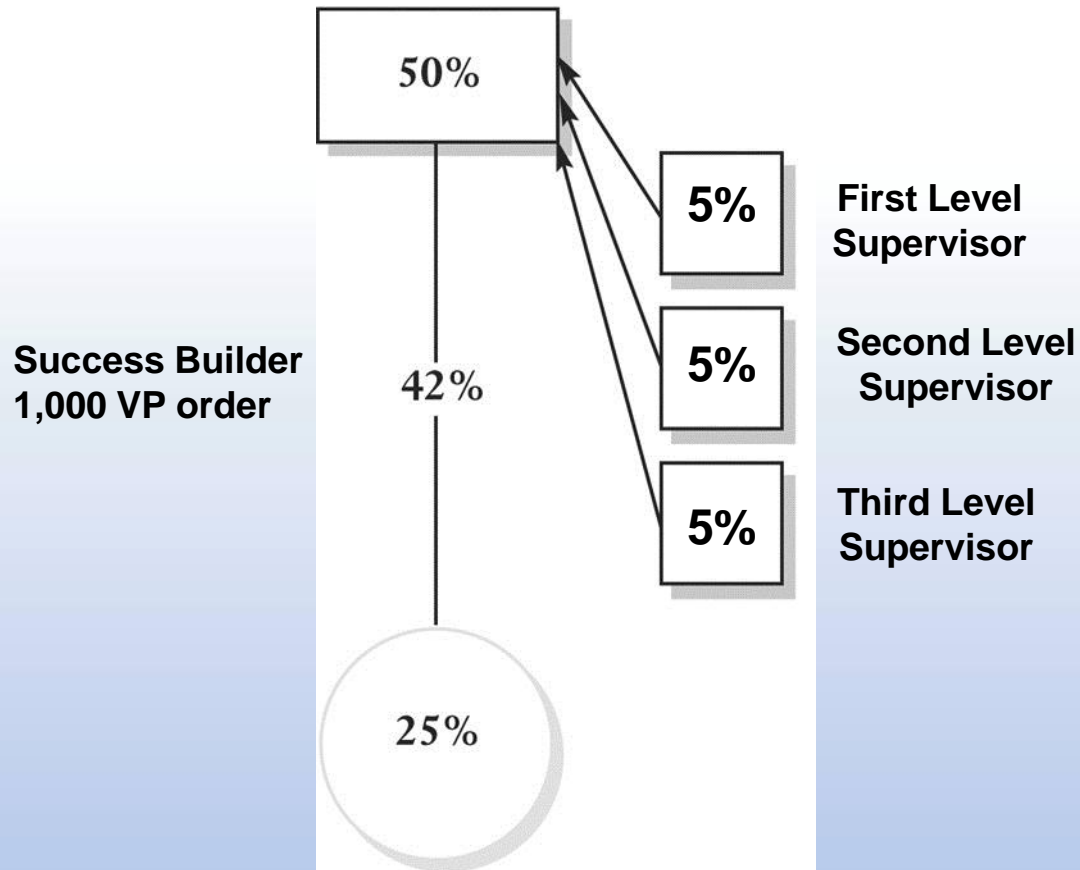
# Senior Consultant, Success Builder and Qualified Producer



# Supervisor



# Earn Royalties



# Duplicate for Income

	2x2x2	3x3x3	5x5x5
Level 1:	5,000	7,500	12,500
Level 2:	10,000	22,500	62,500
Level 3:	20,000	67,500	312,400
Total:	35,000	97,500	387,500
Royalty Overrides:	\$1,750.00	\$4,875.00	\$19,375.00
Production Bonus:	\$700.00	\$3,900.00	\$23,250.00
Your Check:	<b>\$2,450.00</b>	<b>\$8,775.00</b>	<b>\$42,625.00</b>

# Income Results



# ***SUCCESS STORIES***



## **Caroline and Craig Tsutakawa**

***We went from bankruptcy to being set for life***

- Before: \$500,000 in debt, evicted from their home
- Work with Herbalife
  - \$1,000: first week, part-time
  - \$117k first year, \$234k second year
  - Total to date: \$2.6 million

# *Christopher and Mayumi Reese...*

- Christopher - Former Jewelry Designer
- Mayumi - Translator
- Made a good living
- Loved what they did until economy died
- Lived in 700 sq/ft Condo
- Followed Mentors / System to success
- Replaced monthly job income in 18 months
- Started making \$4,000 in 6
- Very consistent for 52 months
- Now making a 6 figure income



***\$9,752/mo in 17  
MONTHS!***

# Dan and Andrea Shanahan

- Corporate America
- Long hours, long commute
- Daughter growing up in Daycare
- First month \$500, 2<sup>nd</sup> month \$2,700, 3<sup>rd</sup> month \$4,100
- Replaced Andrea's monthly job income in 12 months
- Replaced both incomes in 24 months—Dan came home
- End of 2<sup>nd</sup> Year \$10,000 a month
- End of 3<sup>rd</sup> year income hit over \$20,000 a month



# ***What it takes to be Successful***

- 1. A Burning Desire to Change Your Life**
- 2. A Willingness to Learn something new**
- 3. A Willingness to Work**

**You Must ask Yourself....**

**“Do I have all 3”**



# ***We are looking for 3 kinds of people***

- A. Discount Customer – someone who desires a Health Result**
- B. Part-Time Income – \$500 - \$2,500**
- C. Full-Time Income – \$5,000-\$10,000 PLUS a month**



# Next Step

- **Where is the best place for you?**
- **Make a decision**
  1. Imagine if you do...
  2. Imagine if you don't...
  3. Which will serve you better? Imagine, you wake up a year from now and everything has totally changed for the best!? How will that feel!, what will that be like?
- **Only \$65 License and Registration**
  1. Can do business in all 73 countries starting you at a generous 25% Profit margin
  2. Access to our online Business Training and Management website
  3. A Personal Mentor and Support System to assure your success

# Success Favors the Bold!

- In closing please get with the person who invited you and let them know what is best for you and the best form of payment?
- Cash, Amex, MasterCard or Visa

***Welcome to your new life  
and welcome to...***



**HERBALIFE®**

